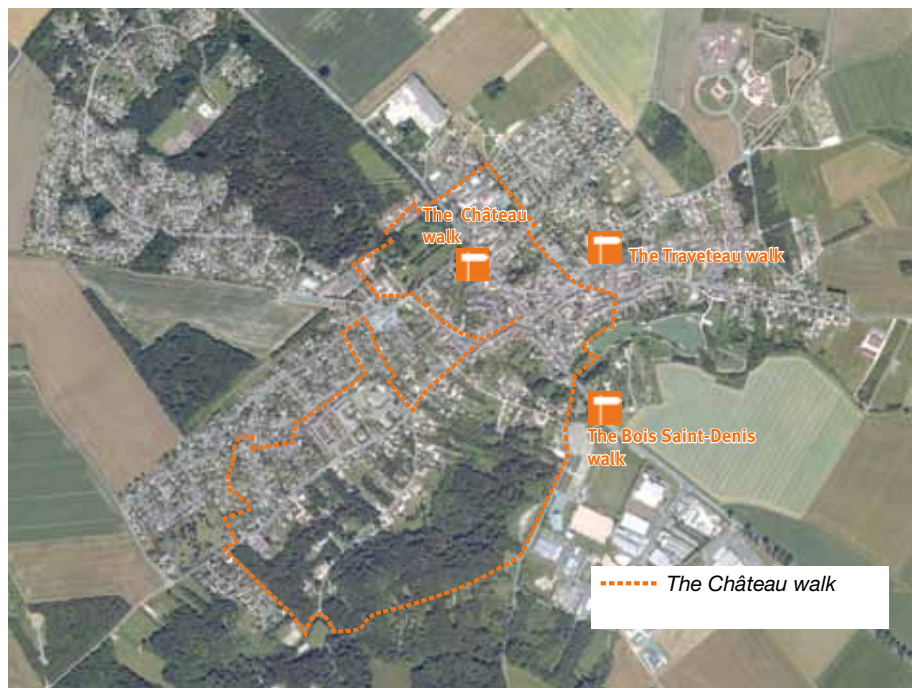




7

Visit and stroll around Châtelet-en-Brie



The castle and the staves



*The church of Sainte-
Marie-Madeleine*



The wash house



The Cross of Balle

The Château walk :

From this signposted circuit discover the remarkable sites of the village. From the Château des Dames, you will discover the Place du Puits de l'Echelle, the Mortier cross, the Sainte-Reine chapel and its grounds, the Town Hall and finally the church of Sainte-Marie-Madeleine. Mainly located in a populated area and focused on the discovery of the heritage of the town, this walk will also take you through the local forest.

Distance: 6km

Approximative duration:
1h30mins

Difficulty: easy

Signposting: yellow

Hike starting point: Château des Dames

The Traveteau walk :

North-east of Châtelet-en-Brie, this hike takes you towards Saveteux and then Traveteau before returning to the heart of the village by the park of Sainte-Reine. After a pleasant walk in the fields, you will have plenty of time to admire the remarkable sites of the village. This tour offers you a blend of nature and architecture.

Distance: 9km

Approximative duration:
2h30mins

Difficulty: moderate

Signposting: yellow

Hike starting point: Church of Sainte-Marie-Madeleine

The Bois Saint-Denis walk :

This circular walk is the one most surrounded by nature. Find yourself in the open fields and in the heart of the Saint-Denis woods. You will pass on your way three farmhouses typical of the Brie region, the Merisier pond and impressive bald cypresses. Finally you will see the cross of Saint-Antoine on the Chemin des terres fortes on your way back to the village.

Distance: 9km

Approximative duration:
2h30mins

Difficulty: moderate

Signposting: yellow

Hike starting point: Sainte-Reine car park

Hike details on our website: www.pasapas77.fr

Village walk in the area : Féricy